

---

# Knowscape Mobile

---

2003-2005

---

Project by fabric | ch

---

Locations: Internet, Boston, Basel, Brussels, Los Angeles

---

Exhibited at SHARE (Boston, USA), Swiss Art Awards (Basel, CH), DIS 2004 (Cambridge, USA), Mediaruimte (Brussels, BE)

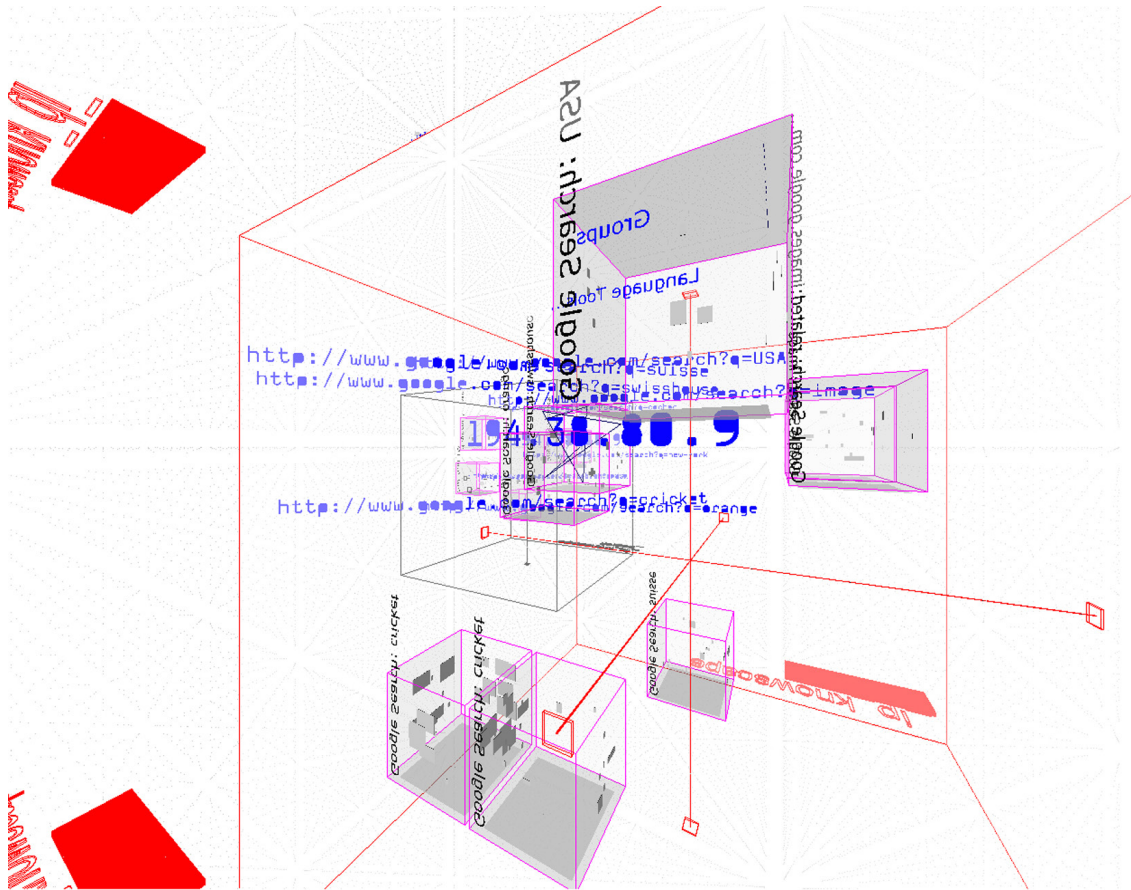
Presented in conference during Siggraph 2004 Conference (Los Angeles, USA)

---

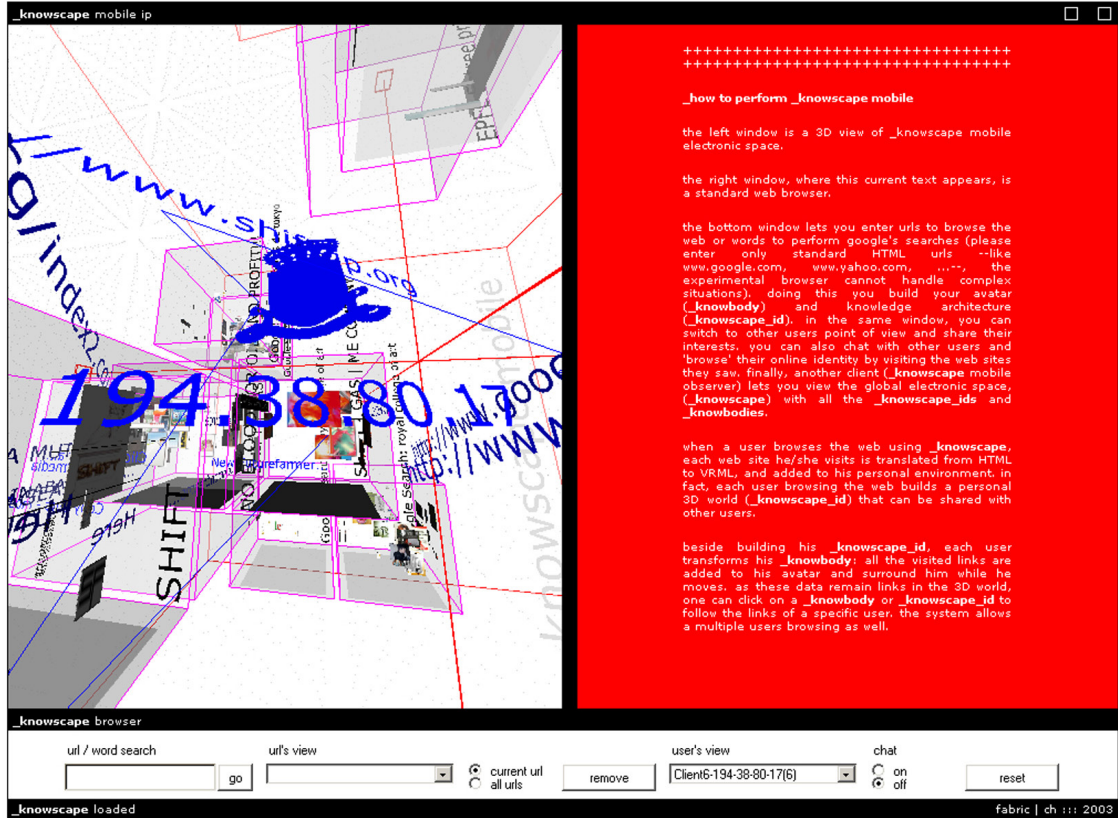
<http://knowscape.fabric.ch/mobile>

- Mobile & networked space
- Relational data environment and information architecture
- Open & shared users' profiling
- Web crawlers & Web bots' avatars
- Alternate 3D web browser and multi-user environment (based on the previous Knowscape alternative 3D web browser)

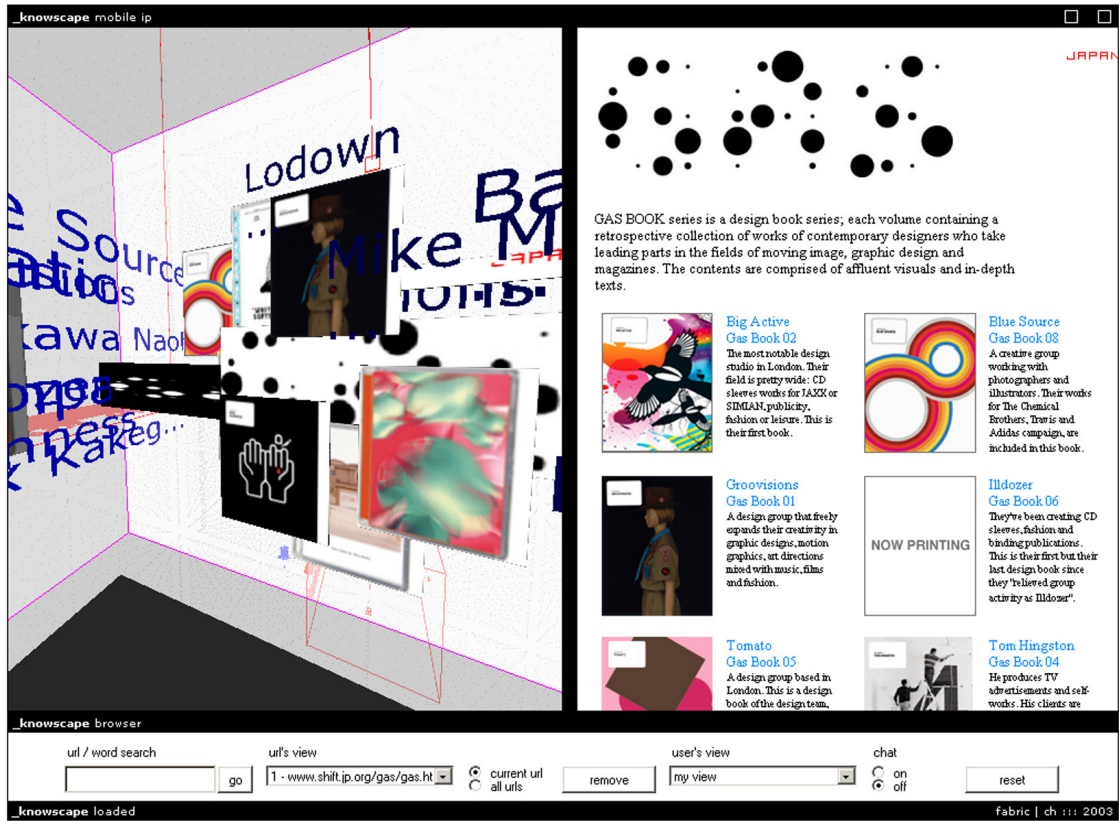




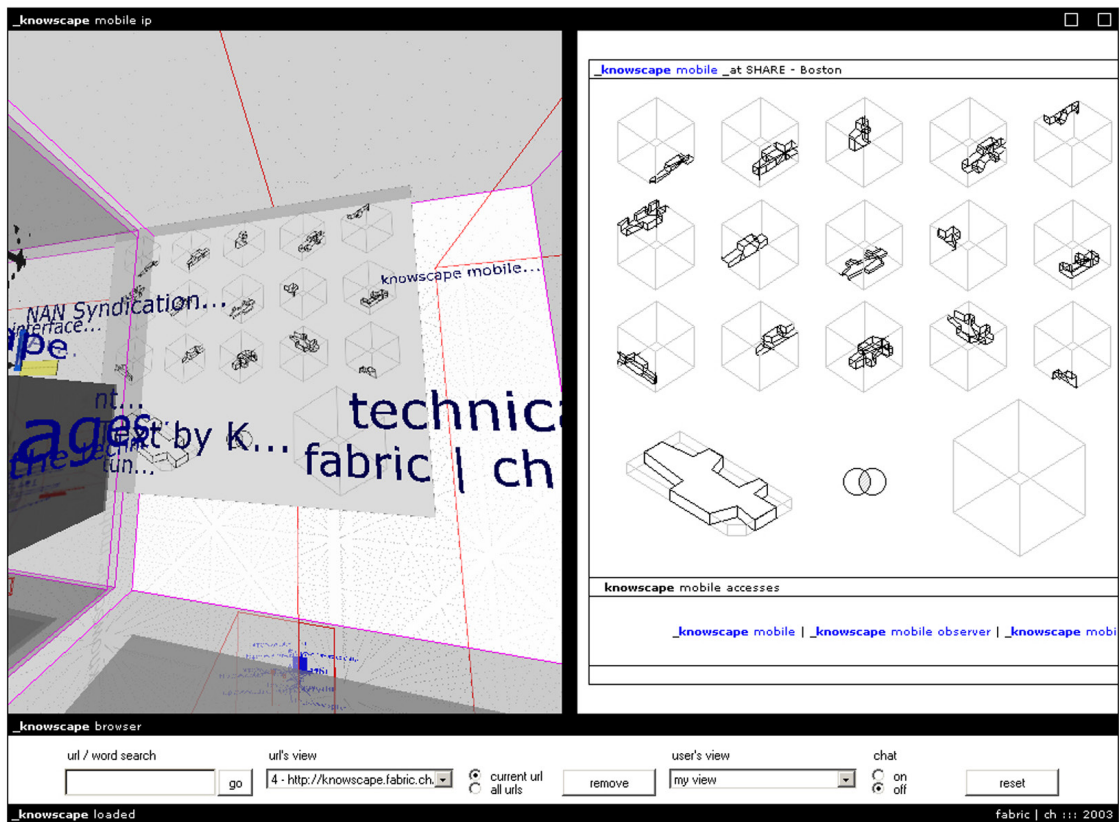
[Img. 3]



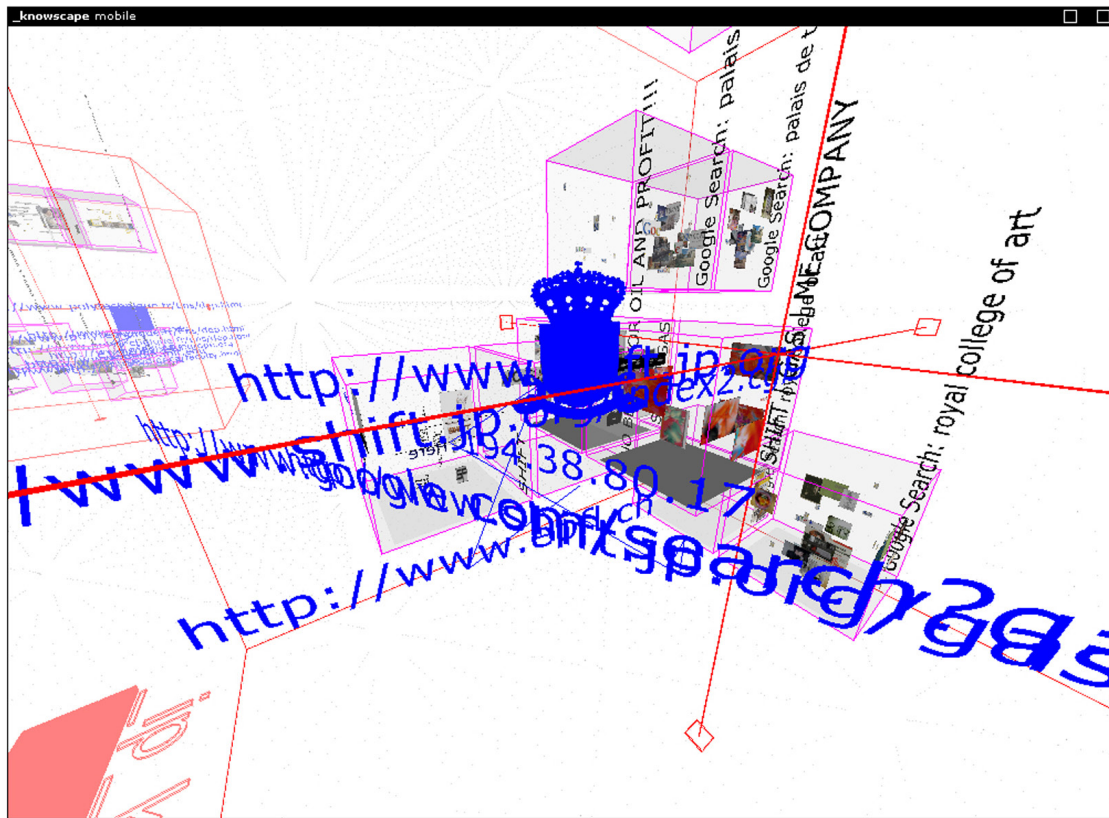
[Img. 4]



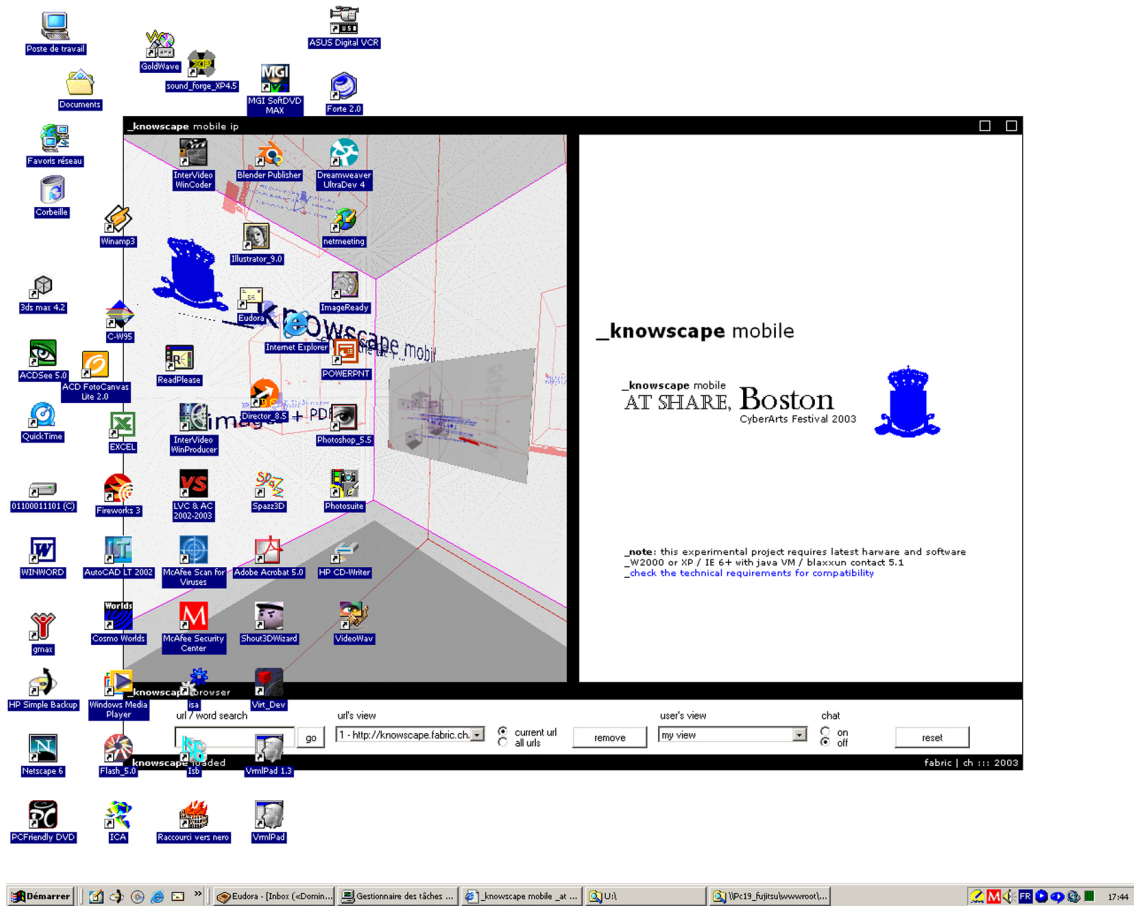
[Img. 5]



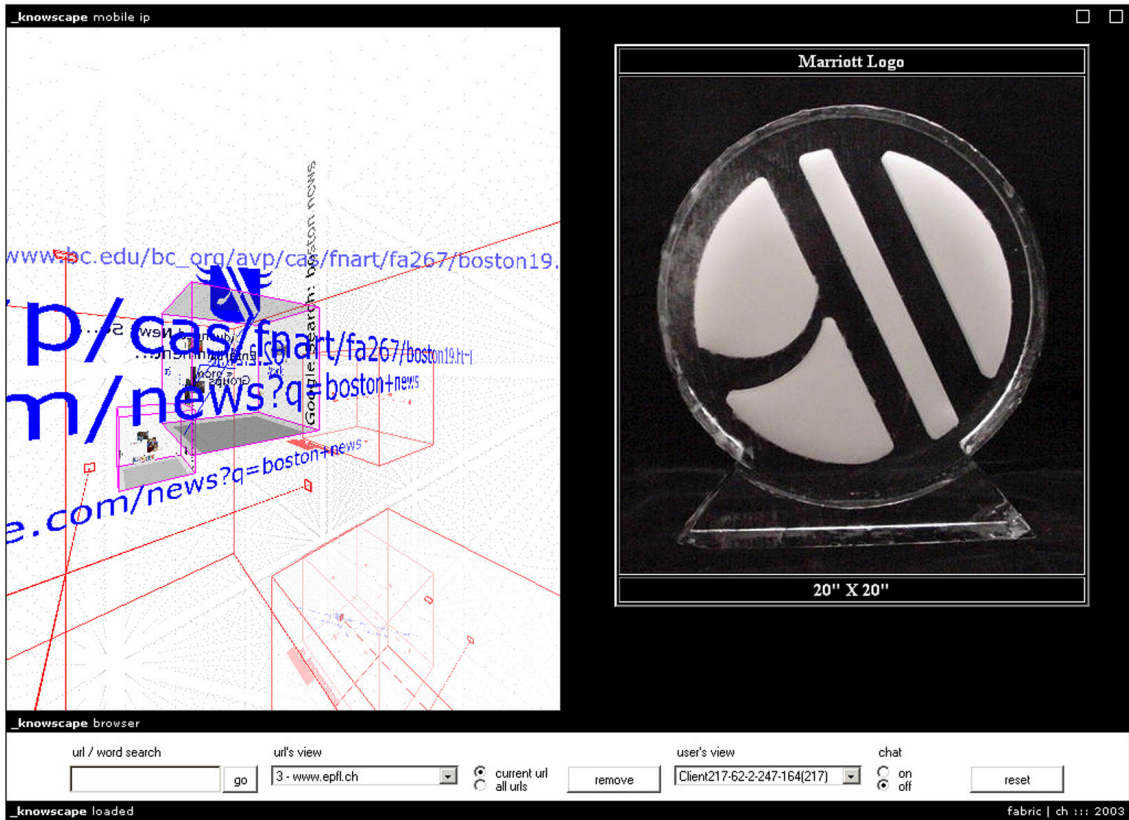
[Img. 6]



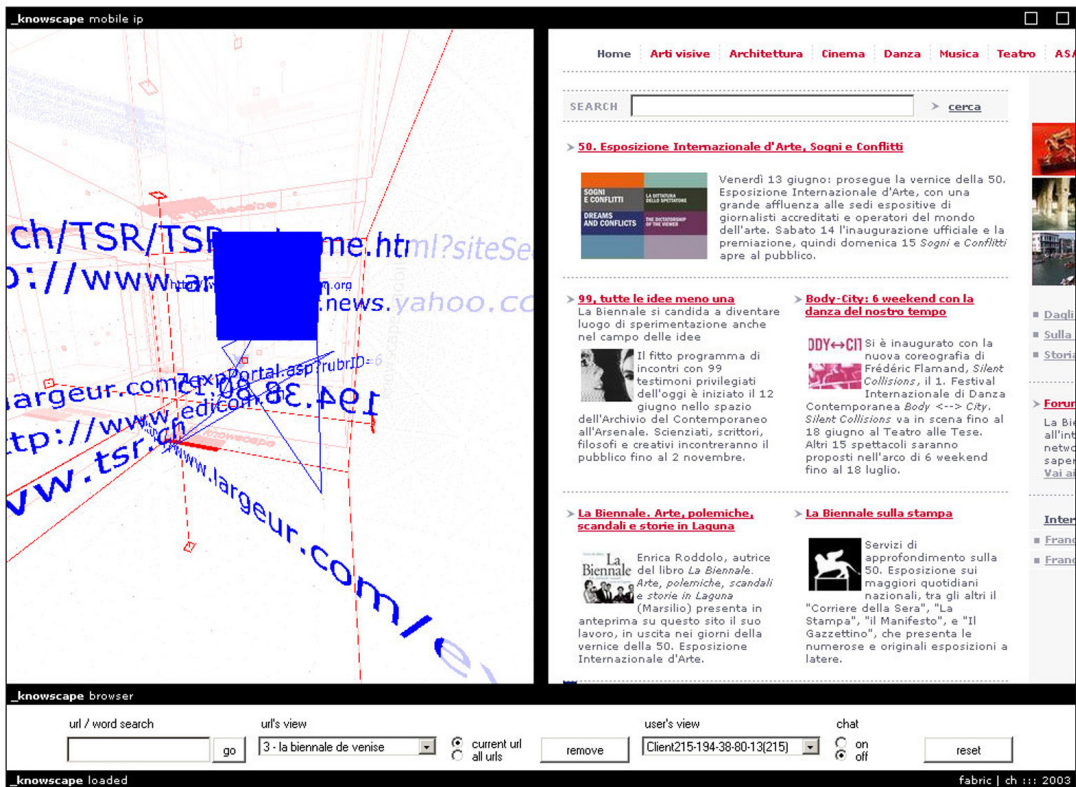
[Img. 7]



[Img. 8]



[Img. 9]



[Img. 10]



[Img. 11]



[Img. 12]

Image captions:

- [Img. 1] Knowscape Mobile is a "boolean" and hybrid space. The principles of association between physical space and digital one are based on "Boolean" operations. Knowscape Mobile will follow fabric | ch and will be re-(geo)localised, from place to place, from time to time, from installation to installation.
- [Img. 2] A view into Knowscape Mobile 3D multi-user and data environment: a generated information space with no precise scale; a temporary and unclear location inhabited by web bots as well as by local and distant users.
- [Img. 3] A user and its avatar (its digital representation, in blue) in the 3D environment with associated links and data construction made of information from the web pages he's been visiting.
- [Img. 4] Another user from SHARE (first Knowscape Mobile location was at SHARE Boston) in front of its construction. The visual display here is the alternate browser with 3D graphics and dynamic data construction on the left, and the traditional 2D web browser on the right.
- [Img. 5] A 3D multi-user display of a web page on the left vs. a single user, 2D and traditional display on the right. The 3D content is just a visual résumé of the web page, designed to give a quick overview. Flat 2D web pages remain the correct way to consult images and texts. The content comes from the web page of SHIFT magazine, Japan.
- [Img. 6] Another situation with the same image from Knowscape Mobile's website in the 3D and 2D displays.
- [Img. 7] A close-up of an avatar logotype with its IP number underneath. The avatar contains all the links that its user has browsed previously. These links remain "clickable": any connected user can experience and share the user/avatars's interests and share their browsing session.
- [Img. 8] Knowscape Mobile used as dynamic background on a Windows desktop.
- [Img. 9] Avatar and logo during a browsing session at DIS 2004, Cambridge (the conference is taking place within a Marriott Hotel).
- [Img. 10] Another avatar that represents a web spider or network bot (net search bot) during its daily activities of browsing thousands of web pages (during Art | 34 | Basel).
- [Img. 11] Installation: a simple screen/projection-based presence of Knowscape Mobile in Boston (SHARE). Thanks to GPS localisation, the volume of the data architecture (basically a cube with no border) has been re-located over the Swiss embassy to contain it totally. Screens act literally as open windows into the information landscape of Knowscape Mobile. The mix of material and data spaces produces a hybrid architecture, both physical and digital.
- [Img. 12] Another set of screens/windows at SHARE in the virtual conference room. On the left is displayed the Knowscape Mobile browser, while, on the right, another located view into the digital architecture appears.

---

# Txt

---

## Knowscape Mobile

**Knowscape** is an experimental electronic space, a digital data territory made of links, connections, relations, knowledge: a networked space. Initially, Knowscape was conceived of as an alternative, multi-user browser (Knowscape, 2001) which used data "tracking" and "profiling" techniques to question, to reverse these techniques, so as to produce open-data territories, shared browsing experiences and "open users' profiles."

Knowscape evolved and became, in 2003, a mobile, downloadable space, a variable space with no fixed or frozen size as well as no definite location: Knowscape Mobile. Since 2003, Knowscape Mobile has moved to various places for performances and exhibitions: Boston, Basel, Cambridge, and Brussels. In each relocation, there is always both a temporary location in the physical space and a worldwide digital one over the Internet. This mobile information architecture can be described as a downloadable relational spatiality. Its installation into physical places creates a space of reversed surveillance, an "open data architecture." Therefore, Knowscape Mobile questions and transforms, in a soft and transitory manner, the functionality, the materiality, the unicity and the scale of each sensible space it is installed in.

Based on low aesthetics and close to machines' direct visual outputs, Knowscape Mobile builds electronic spaces with information-based voxels (3D pixels). Each user creates their own data architecture, made of contiguous voxels; the addition of these spaces creates a shared knowledge 3D territory.

Knowscape Mobile's relation to physical space is also simple and direct: Boolean. Indeed, Knowscape Mobile uses Boolean algebraic operations to mix the data space with the physical one: in each installation, electronic devices open windows on this re-localized data territory, which allow visitors to interact with it either from the physical space or from the Internet.

Knowscape Mobile is thus an architectural space that temporarily associates the territory of data and physical space, linking architecture, knowledge and browsing.

---

# Relocation\_1/exhibit

---

## Knowscape Mobile at SHARE, Boston (Boston CyberArts 2003)

SHARE (Swiss House for Advanced Research and Education, Boston) hosts Knowscape Mobile from April 30 to May 9, 2003. Through a "Boolean" operation (intersection), electronic and physical space are gathered into a mixed reality.

Electronic devices (laptops, plasma displays, beamers, ...) open windows from the lobby on this re-localized data territory, which allow visitors to interact, either from the sensible space or from the Internet, within this new kind of hybrid environment.

Knowscape Mobile at SHARE is thus an architectural space associating a distributed territory of data and a physical, localized space during a defined time period, linking architecture, knowledge and browsing.

---

April 30, 2003 (6-7 pm EST, 1-2 pm GMT)

Mixed realities

Interconnections between digital and physical spaces

-

+ Christophe Guignard (fabric | ch - electronic architecture)

+ Tad Hirsch (Medialab - Computer Culture)

+ Jeffrey Huang (Harvard Design School)

+ Karrie Karahalios (Medialab - Sociable Media)

+ Muriel Waldvogel (Boston Architectural Center)

+ George Fifield, moderator (Boston Cyberarts Festival)

-

Swiss House for Advanced Research and Education

420 Broadway, Cambridge, MA 02138

---

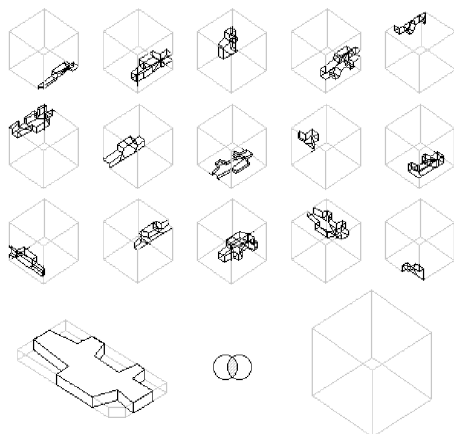
April 30, 2003 (7-8 pm EST, 1-3 pm GMT)

**Knowscape Mobile** opening at SHARE - Boston

Swiss House for Advanced Research and Education

420 Broadway, Cambridge, MA 02138

-



---

# Relocation\_2/exhibit

---

## Knowscape Mobile at HALLE 3.0, Basel (Swiss Art Awards)

From June 6 to 23, 2003 Knowscape Mobile stands at the SWISS ART AWARDS exhibition, which takes place in the HALLE 3.0 during ART Basel.

Through a Boolean operation (intersection), electronic and physical space are gathered into a mixed reality. It generates a microarchitecture, a distributed (work-)place, where electronic devices (laptops, TFT displays, ...) open windows on a localized data territory.

Visitors are invited to interact, either from the sensible space or from the internet, within this new kind of hybrid environment.

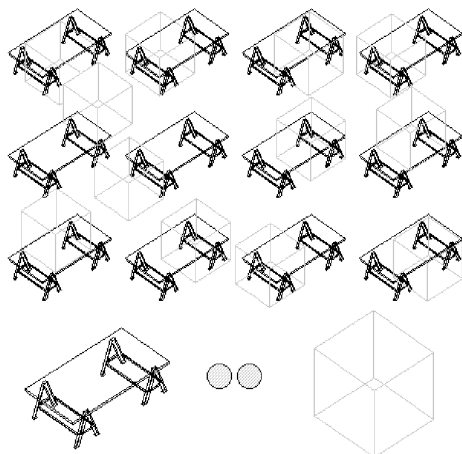
**Knowscape Mobile** at HALLE 3.0 is thus a microarchitecture associating a distributed territory of data and a physical, localized space during a defined period of time, linking architecture, (work-) place, knowledge and browsing.

---

June 16, 2003 (6-8 pm CET, 4-6 pm GMT)  
**Swiss Art Awards** opening at HALLE 3.0, Basel  
HALLE 3.0, Messe, CH-4005 Basel

-  
June 17-23, 2003  
Knowscape Mobile at HALLE 3.0, Basel  
**Swiss Art Awards**  
HALLE 3.0, Messe, CH-4005 Basel  
Free admission - every days from 10 am to 7 pm CET

-  
June 19, 2003 (10 am CET, 8 am GMT)  
**Swiss Art Awards invites Art | 34 | Basel**  
HALLE 3.0, Messe, CH-4005 Basel  
Free admission



fabric | ch, Lausanne, June 2003

---

# Relocation\_3/exhibit

---

## Knowscape Mobile at DIS2004, Cambridge [ACM SIGCHI 2004]

From August 1 to 4, 2004, Knowscape Mobile stands at the DIS2004 symposium (ACM SIGCHI), which takes place in the Boston Marriott Cambridge Hotel in Cambridge (Massachusetts).

This time, Knowscape Mobile s(t)imulates space configurations in relation to architectural typologies and architectural models (1:20 I-shaped building, T-shaped building, cross-shaped church, square-shaped courtyard). Through a series of "Boolean" operations (intersection and exclusion), Knowscape Mobile mixes electronic and physical spaces to generate four distributed microarchitectures (one per day). For each typology, a specific relationship between electronic and physical spaces is created, producing a kind of "space tagging."

To generate these "networked typologies" (augmented information / reduced presence), all of the electronic devices (laptops, beamers, ...) are networked and localized, which transforms each of them into a visual interface, open and linked windows to the data territories.

Visitors are invited to interact, either from the sensible space (Boston Marriott Cambridge, 2 Cambridge Center (Broadway & 3rd Street) Cambridge, MA 02142 USA, GPS 42° 21' 45" / -071° 05' 11") or from the Internet, within this new kind of hybrid environment.

---

August 1, 2004 (6-9 pm EST, 10 pm - 1 am GMT)

**I-shaped networked typology**

DIS2004 Design Open House at Boston Marriott Cambridge

GPS 42° 21' 45" / -071° 05' 11"

-

August 2, 2004 (7-9 pm EST, 11 pm - 1 am GMT)

**T-shaped networked typology**

GPS 42° 21' 45" / -071° 05' 11"

-

August 3, 2004 (3:30-7:30 pm EST, 7:30-11:30 pm GMT)

**Cross-shaped networked typology**

GPS 42° 21' 45" / -071° 05' 11"

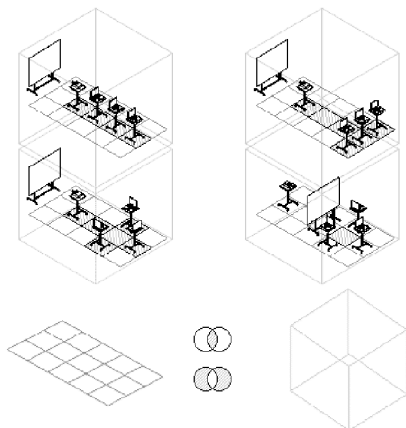
-

August 4, 2004 (1:30-3:30 pm EST, 5:30-7:30 pm GMT)

**Square-shaped networked typology**

GPS 42° 21' 45" / -071° 05' 11"

-



---

# Relocation\_4/exhibit

---

## Knowscape Mobile at Mediaruimte, Brussels

MEDIARUIMTE (XYZ 01T, Brussels) hosts **Knowscape Mobile** from April 14<sup>th</sup> to 21<sup>st</sup>, 2005. Through a "Boolean" operation (union), electronic and physical spaces are gathered into a mixed reality.

The scale of **Knowscape Mobile** at MEDIARUIMTE, Brussels is set according to the size of the building and its floors: the cubes generated by visited web pages, translated from HTML to VRML, from 2D to 3D, fit into the built space, between floor and ceiling. They pile up to fill the environment with distributed spaces made out of knowledge, information and sounds. The result mixes the physical architecture of the gallery with a space mostly populated and generated by bots and "webspiders."

Through a logical operation (union), electronic and physical spaces are gathered to create a new kind of architecture: geolocalized and distributed, material and non-material.

Electronic devices (desktops, laptops connected to TFT displays, beamers, ...) open 'windows' from the lobby on this re-localized data territory. Instead of a 'cave' system, which offers one point of view, these visual outputs are coordinated to create an unlimited series of localized and connected views: each of them has its own point of view but is linked spatially to the others. The gallery becomes the (multi-)viewer.

**Knowscape Mobile** at MEDIARUIMTE is thus an architectural space associating a distributed territory of data and a physical localized space during a defined period of time, linking architecture, knowledge and browsing.

---

April 14, 2005 (18:00 - 22:00 GMT+1)

**Knowscape Mobile** at MEDIARUIMTE, Brussels

Opening

MediaRuimte (XYZ 01T)

104 rue de Laeken, 1000 Brussels, Belgium

-

April 15, 2005 (20:30 - 22:00 GMT+1)

**Information Architecture, Artifices and S(t)imulated Spaces**

Conference by Christophe Guignard, fabric | ch

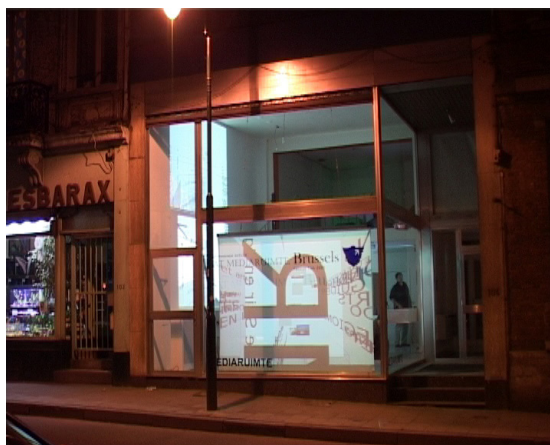
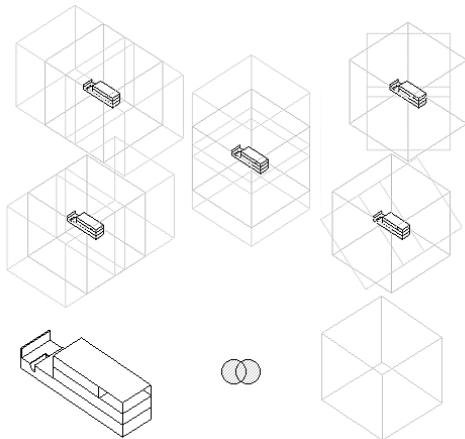
-

April 14-21, 2005

**Knowscape Mobile** at MEDIARUIMTE, Brussels

Every day from 18:00 - 22:00 GMT+1

-



---

# Contact

---

fabric | ch (97-26)

**Architecture/Art direction:**

Patrick Keller

Christophe Guignard

-

**Technical/Technological direction:**

Christian Babski

Stéphane Carion

-

**Collaborators:**

Marc Escher

Franz Hoffman

**Contact:**

fabric | ch

6, rue de Langallerie

1003 Lausanne

Switzerland

-

[www.fabric.ch](http://www.fabric.ch)

-

t. +41(0)21-3511021 // f. +41(0)21-3511022 // m. info@fabric.ch